

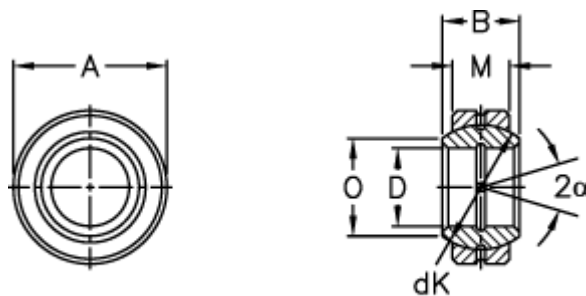
Data Sheet



Article number: 03501050

Description: Fluro Rod end GE 50E-2RS

Measures



Str. 6-12 uden smørerille

| | | |
|---------------------|---------------|----------------|
| A | = 75 0 -0,013 | Tilt angle = 6 |
| B | = 35 | Weight = 530 |
| D | = 50 0 -0,012 | |
| dK | = 66 | |
| Dynamic load C (kN) | = 156 | |
| M | = 28 | |
| O | = 55.9 | |
| Static load C0 (kN) | = 780 | |